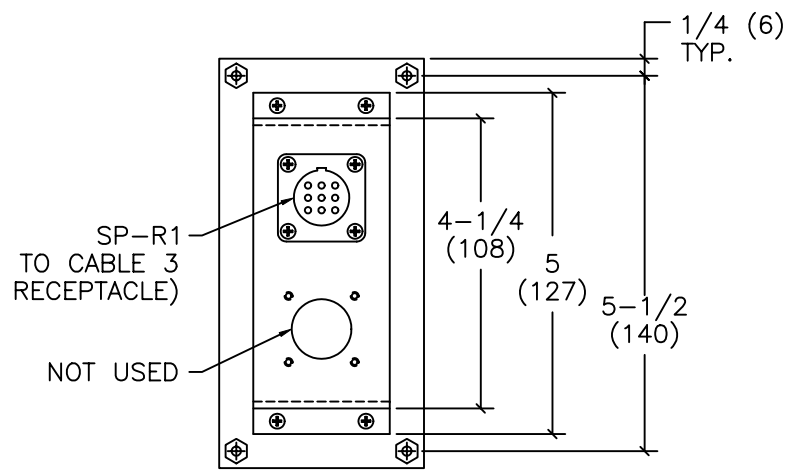
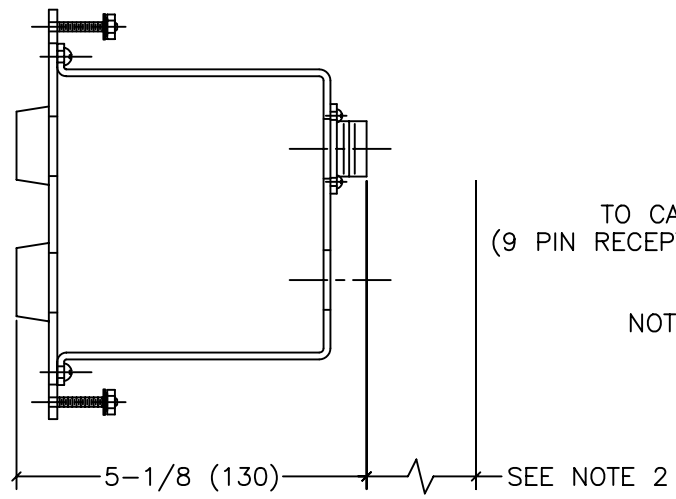
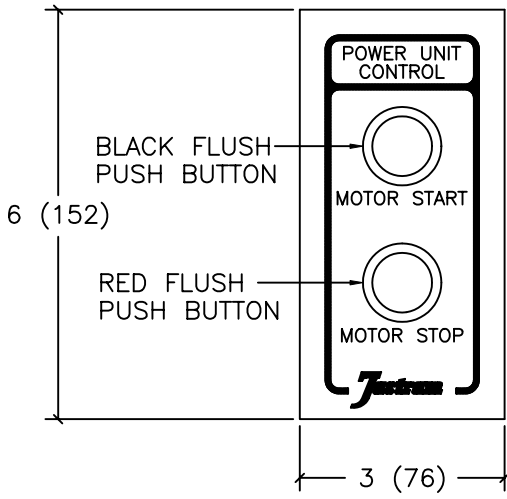


6-32 x 1" LG. STUD WITH NUT, LOCKWASHER & WASHER (4 PLACES) MAXIMUM ALLOWABLE PANEL THICKNESS 11/16 (17)

- NOTES:**
1. QUICK DISCONNECT, WATER RESISTANT PLUGS (WITH STRAIN RELIEF) SUPPLIED BY JASTRAM.
  2. LEAVE 4 INCHES (100mm) CLEARANCE FROM RECEPTACLE FOR CABLE.



ALL DRAWINGS, TECHNICAL DATA AND INTELLECTUAL INFORMATION ARE PROPERTY OF JASTRAM ENGINEERING LTD. THEY ARE NOT TO BE COPIED, DUPLICATED OR USED WITHOUT THE WRITTEN CONSENT OF JASTRAM ENGINEERING LTD.

**TOLERANCES: (UNLESS SPECIFIED OTHERWISE)**

X.X	+/- 0.1	FRACTION	+/- 1/64
X.XX	+/- 0.01	ANGULAR	+/- 0.5 DEG.
X.XXX	+/- 0.005	SURFACE FINISH	▽

ALL DIMENSIONS IN INCH(mm)

REV.	DATE	DRAWING/DESIGN CHANGE No.	BY
		JASTRAM ENGINEERING LTD. 485 Mountain Highway North Vancouver, B.C. Canada V7J 2L3 Tel.: (604) 986-0714 Fax: (604) 986-0334	
		DATE: 03-06-94 (D/M/Y)	SCALE: 1/2":1"
TITLE: SP-36-1 STARTER PANEL OVERALL DIMENSIONS			DRAWING NUMBER: B-721060