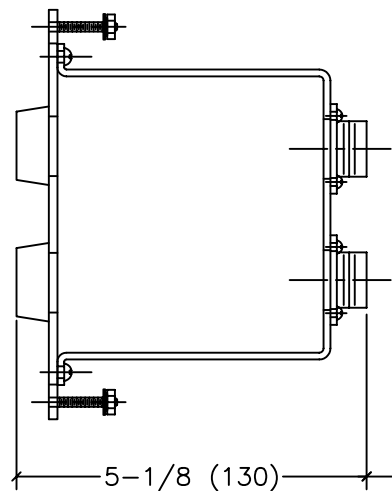
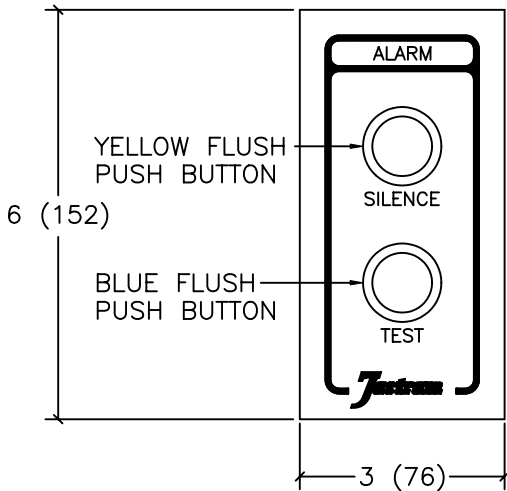
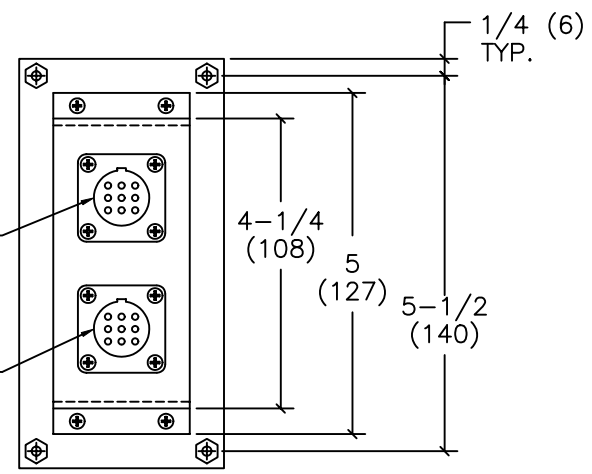


6-32 x 1" LG. STUD WITH NUT, LOCKWASHER & WASHER (4 PLACES) MAXIMUM ALLOWABLE PANEL THICKNESS 11/16 (17)

- NOTES:**
1. QUICK DISCONNECT, WATER RESISTANT PLUGS (WITH STRAIN RELIEF) SUPPLIED BY JASTRAM.
 2. LEAVE 4 INCHES (100mm) CLEARANCE FROM RECEPTACLE FOR CABLE.
 3. OPTIONAL RECEPTACLE (TP-R2) IS PROVIDED ON TP-36-2. TEST & SILENCE PANEL THEN SERVES TWO MOTOR STARTER AND ALARM SYSTEMS. SEE MOTOR STARTER AND ALARM CABLING DIAGRAM.
 4. SILENCE PUSH BUTTON FUNCTIONS TO SILENCE AND RESET.



TP-R1 TO CABLE 2 (9 PIN RECEPTACLE)
 TP-R2 TO SECOND UNIT'S CABLE 2 (OPTIONAL TP-36-2 9 PIN RECEPTACLE)
 SEE NOTE 2



ALL DRAWINGS, TECHNICAL DATA AND INTELLECTUAL INFORMATION ARE PROPERTY OF JASTRAM ENGINEERING LTD. THEY ARE NOT TO BE COPIED, DUPLICATED OR USED WITHOUT THE WRITTEN CONSENT OF JASTRAM ENGINEERING LTD.

TOLERANCES: (UNLESS SPECIFIED OTHERWISE)

X.X	+/- 0.1	FRACTION	+/- 1/64
X.XX	+/- 0.01	ANGULAR	+/- 0.5 DEG.
X.XXX	+/- 0.005	SURFACE FINISH	▽

ALL DIMENSIONS IN INCH(mm)

REV.	DATE	DRAWING/DESIGN CHANGE No.	BY
		JASTRAM ENGINEERING LTD. 485 Mountain Highway North Vancouver, B.C. Canada V7J 2L3 Tel.: (604) 986-0714 Fax: (604) 986-0334	
		DATE: 03-06-94 (D/M/Y)	SCALE: 1/2":1"
TITLE: TP-36 TEST PANEL OVERALL DIMENSIONS			DRAWING NUMBER: B-721061