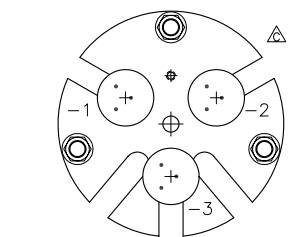


| MODEL | DASH No. | APPLICATION | ASSEMBLY No. |
|-------|----------|----------------------|--------------|
| EW-1 | -1 | ELECTRIC WHEEL-1 POT | 701006-1 |
| EW-2 | -2 | ELECTRIC WHEEL-2 POT | 701006-2 |
| EW-3 | -3 | ELECTRIC WHEEL-3 POT | 701006-3 |

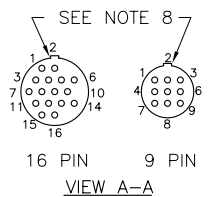
| No. | ITEM No. | PART No. | DESCRIPTION | SPEC. |
|-----|----------|----------|-------------|-------------------------------|
| 1 | 1 | 50 | 316002 | FLAT WASHER |
| 1 | 1 | 51 | 309002 | HEX. HD. CAPSCREW |
| 1 | 1 | 52 | 406003 | INNER RACE |
| 1 | 1 | 53 | 405003 | OUTER RACE |
| 4 | 4 | 54 | 304021 | SOCK. HD. CAPSCREW |
| 4 | 4 | 55 | 348001 | HELI COIL |
| 1 | 1 | 56 | 711000-1 | FRONT HOUSING |
| 1 | 1 | 57 | 508002 | SOCK. HD. PIPE PLUG |
| - | 1 | 58 | 950012-2 | PLUG KIT - 9 PIN (NOT SHOWN) |
| 1 | - | 59 | 950012-3 | PLUG KIT - 16 PIN (NOT SHOWN) |

| No. | ITEM No. | PART No. | DESCRIPTION | SPEC. | |
|-----|----------|----------|-------------|----------|---|
| 3 | 3 | 3 | 1 | 329010 | HEX NUT |
| 3 | 3 | 3 | 2 | 322001 | LOCKWASHER |
| 3 | 3 | 3 | 3 | 711017-1 | SPACER STUD |
| 1 | 1 | 1 | 4 | 402001 | BEARING |
| 1 | 1 | 1 | 5 | 201020 | "O"-RING-020, 7/8 ID x 1 OD x 1/16 SEC. |
| 2 | 2 | 2 | 6 | 211005 | "O"-RING-032, 1-7/8 ID x 2 OD x 1/16 SEC. |
| 1 | 1 | 1 | 7 | 711008-1 | BEARING BRACKET |
| 2 | 2 | 2 | 8 | 337019 | SOCK. HD. SETSCREW |
| 1 | 1 | 1 | 9 | 711006-1 | SHAFT RING |
| 1 | 1 | 1 | 10 | 711005-1 | SLIDER BLOCK |
| 1 | 1 | 1 | 11 | 711009-1 | THREADED SHAFT |
| 1 | 1 | 1 | 12 | 711001-1 | SLIDER BLOCK GUIDE PIN |
| 1 | 1 | 1 | 13 | 901023 | SERIAL/ID LABEL |
| 2 | 2 | 2 | 14 | 337011 | SOCK.HD. SETSCREW |
| 1 | 1 | 1 | 15 | 508003 | SOCK. HD. PIPE PLUG |
| 16 | 16 | 16 | 16 | 304012 | SOCK. HD. CAPSCREW |
| 1 | 1 | 1 | 17 | 701040-1 | CHASSIS GROUND WIRING HARNESS |
| 1 | 1 | 1 | 18 | 411074-1 | POT MOUNTING BRACKET |
| 2 | 6 | 6 | 19 | 312012 | PAN HD. PHIL. SCREW |
| 5 | 1 | 1 | 20 | 312015 | PAN HD. PHIL. SCREW |
| - | 1 | 1 | 21 | 835002 | RECEPTACLE - 9 PIN |
| 1 | - | - | 22 | 835003 | RECEPTACLE - 16 PIN |
| - | 1 | 1 | 23 | 711010-1 | REAR HOUSING COVER - 9 PIN |
| 1 | - | - | 24 | 711010-2 | REAR HOUSING COVER - 16 PIN |
| 1 | 1 | 1 | 25 | 711003-1 | REAR HOUSING |
| 1 | 1 | 1 | 26 | 337018 | SOCK. HD. SETSCREW |
| 1 | 1 | 1 | 27 | 316006 | FLATWASHER |
| - | - | - | 28 | 828010 | CABLE CLAMP |
| 1 | 1 | - | 29 | 828014 | CABLE CLAMP |
| 3 | 2 | 1 | 30 | 701033-1 | EW WIRING HARNESS |
| 1 | 1 | 1 | 31 | 816002 | SPUR GEAR |
| 1 | 1 | 1 | 32 | 347013 | SPRING PIN |
| 1 | 1 | 1 | 33 | 108005 | GEAR PIN |
| 2 | 2 | 2 | 34 | 345005 | EXTERNAL SNAP RING |
| 2 | 2 | 2 | 35 | 601006 | CYCLE BALL |
| 2 | 2 | 2 | 36 | 602011 | SPRING |
| 2 | 2 | 2 | 37 | 202004 | "O"-RING (METRIC), 125 ID x 129 OD x 2 SEC. |
| 2 | 2 | 2 | 38 | 337008 | SOCK. HD. SETSCREW |
| 1 | 1 | 1 | 39 | 337010 | SOCK. HD. SETSCREW |
| 1 | 1 | 1 | 40 | 343008 | DOWEL PIN |
| 2 | 2 | 2 | 41 | 216004 | SLEEVE BRG. |
| 1 | 1 | 1 | 42 | 347001 | SPRING PIN |
| 1 | 1 | 1 | 43 | 711016-1 | ADAPTOR RING |
| 1 | 1 | 1 | 44 | 602005 | SPRING |
| 1 | 1 | 1 | 45 | 107002 | FRICION INSERT |
| 1 | 1 | 1 | 46 | 711004-1 | FRONT PLATE |
| 1 | 1 | 1 | 47 | 201018 | "O"-RING-018, 3/4 ID x 7/8 OD x 1/16 SEC. |
| 1 | 1 | 1 | 48 | 711002-1 | INNER SHAFT |
| 1 | 1 | 1 | 49 | 311004-5 | HELM PUMP KEY |

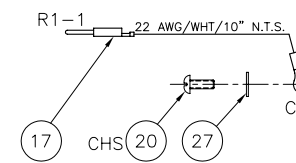
CONNECTOR TERMINAL LEGEND
R#-# RECEPTACLE No.-PIN SOCKET No.
CHS EW ENCLOSURE CHASSIS LUG.



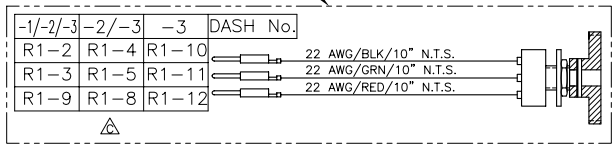
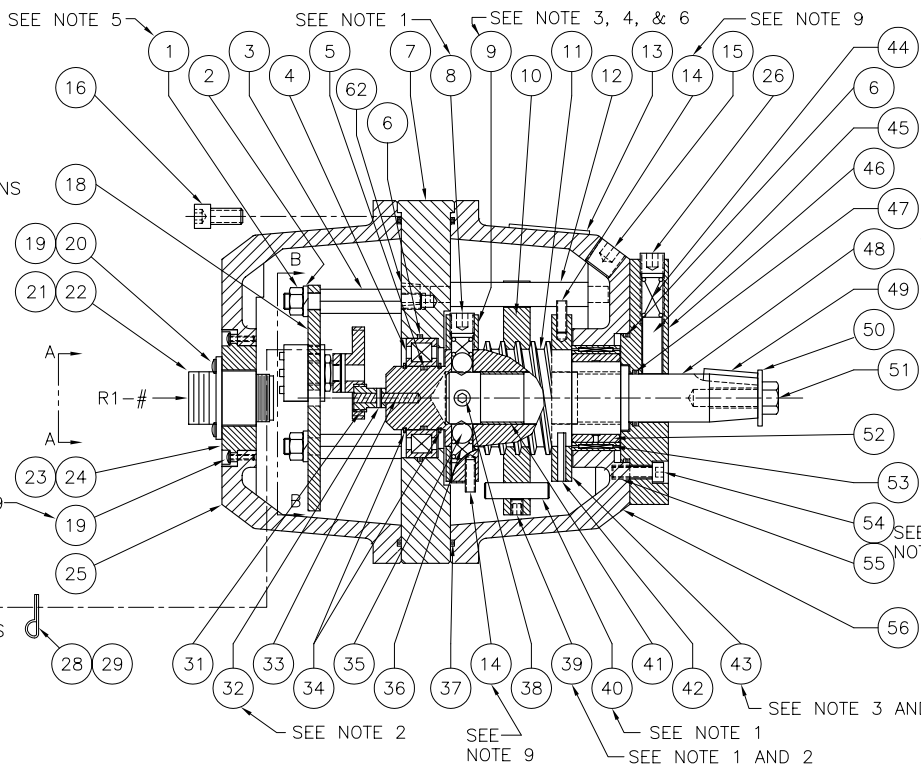
POTENTIOMETER POSITIONING FOR DASH 1, 2 & 3 APPLICATIONS VIEW B-B



16 PIN 9 PIN VIEW A-A



- NOTES:
1. PEEN ON ASSEMBLY.
 2. DRILL $\phi 1/16$ THRU ON ASSEMBLY.
 3. DRILL $\phi 9/64 \times 3/8$ DP. & TAP 10-24 x 1/4 DP. ON ASSEMBLY.
 4. DRILL $\phi 21/64$ THRU & TAP 3/8-24NF, 2 PLACES-180° APART INTO THREADED SHAFT ON ASSEMBLY.
 5. LOCKTITE IN PLACE WITH REMOVABLE THREADLOCKER No. 242.
 6. DRILL $\phi 13/64 \times 3/4$ DP., TAP 1/4-20NC x 5/8 DP., 2 PLACES-180° APART INTO THREADED SHAFT ON ASSEMBLY.
 7. DRILL $\phi 1/8 \times 3/4$ DP. INTO THREADED SHAFT ON ASSEMBLY.
 8. USE LARGE POLARIZATION CUT OUT TO ORIENT RECEPTACLE "UP".
 9. ITEM AND HOLE LOCATION SHOWN OUT OF POSITION.
 10. RECEPTACLE SOCKET NUMBERS ARE EMBOSSED ON RECEPTACLES. SEE ALSO VIEW A-A FOR REFERENCE.
 11. GREASE FRONT HOUSING WITH LUBRIPLATE No. 105 (WHITE GREASE).
 12. POTENTIOMETER(S) TO BE CENTERED AFTER FINAL ASSEMBLY.



CUSTOMER PARTS LIST

TOLERANCES: (UNLESS SPECIFIED OTHERWISE)

| | | | |
|-------|-----------|----------------|--------------|
| X.X | +/- 0.1 | FRACTION | +/- 1/64 |
| X.XX | +/- 0.01 | ANGULAR | +/- 0.5 DEG. |
| X.XXX | +/- 0.005 | SURFACE FINISH | |

ALL DIMENSIONS IN INCH(MM)

| | | | |
|---|----------|------------------|------|
| C | 16-09-96 | SEE DCN 960053 | |
| B | 11-06-96 | SEE DCN 960035 | G.C. |
| A | 24-12-93 | SEE DCN 930120 | G.C. |
| - | 26-10-92 | PRODUCTION ISSUE | L.L. |

REV. DATE DRAWING/DESIGN CHANGE No. BY

Jastram

JASTRAM ENGINEERING LTD.
467 Mountain Highway
North Vancouver, B.C.
Canada V7J 2L3
Tel: (604) 986-0714
Fax: (604) 986-0334

DATE: 25-06-92 SCALE: N.T.S. DRAWN: M.L.L. APPR: G.C. J.L.L.
(02/02/92) TITLE: ELECTRIC WHEEL ASSEMBLY DRAWING NUMBER: D-701006