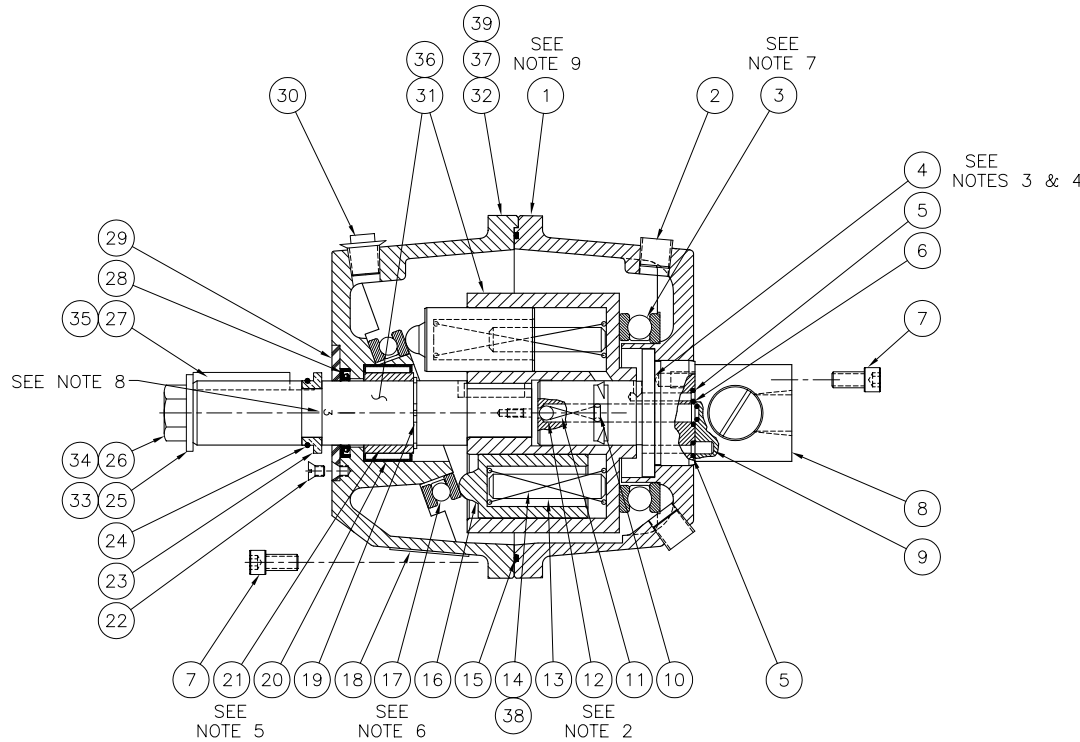


1	1	1	30	553003	SQUARE HEAD FLANGED PIPE PLUG	
1	-	-	31	301000-2	H20 ROTOR & SHAFT ASSEMBLY	INSEP. ASS'Y
1	-	-	32	311006-3	H20 FRONT HOUSING	
△	1	1	33	316015	WASHER	
-	1	1	34	309001	HEX HD. CAP SCREW	
-	1	1	35	311004-2	KEY	
-	1	1	36	301000-1	H26/36 ROTOR & SHAFT ASSEMBLY	INSEP. ASS'Y
-	-	1	37	311006-1	H26 FRONT HOUSING	
-	6	-	38	602008	SPRING	
-	1	-	39	311006-2	H36 FRONT HOUSING	

DASH No.	ITEM No.	PART No.	DESCRIPTION	SPEC			
-3	-2	-1	QNTY.				
△	1	1	1	311002-2	REAR HOUSING		
△	2	2	2	509001	SQUARE HEAD PIPE PLUG		
△	1	1	1	3	410001	THRUST BEARING	
△	1	1	1	4	311036-1	PINTLE	
△	2	2	2	5	201006	0-RING -006, 1/8 ID x 1/4 OD x 1/16 SEC	BUNA-N 70 DURO
△	2	2	2	6	201011	0-RING -011, 5/16 ID x 7/16 OD x 1/16 SEC	BUNA-N 70 DURO
△	10	10	10	7	304012	SOCK. HD. CAP SCREW	
△	1	1	1	8	401001-1	3/8" LOCKVALVE (FOR H20/26/36)	SUB-ASS'Y
△	1	1	1	9	347005	SPRING PIN	
△	2	2	2	10	347020	SPRING PIN	
△	2	2	2	11	602012	SPRING	
△	2	2	2	12	601001	CYCLE BALL	
△	6	6	6	13	311005-1	SPRING INSERT	
△	6	-	6	14	602001	SPRING	
△	1	1	1	15	202004	0-RING, 125mm ID x 129mm OD x 2mm SEC	BUNA-N 70 DURO
△	6	6	6	16	311021-1	H20/26/36 PISTON	
△	1	1	1	17	401002	THRUST BEARING	
△	1	1	1	18	901003	SERIAL/ID LABEL	
△	1	1	1	19	345001	EXTERNAL SNAP RING	
△	1	1	1	20	405001	NEEDLE BEARING OUTER RACE	
△	1	1	1	21	406001	BEARING SLEEVE INNER RACE	
△	3	3	3	22	311001	FLAT HD. SCREW	
△	-	1	1	23	311008-1	WHEEL STOP (2 PIECES)	
△	-	1	1	24	201019	0-RING -019, 13/16 ID x 15/16 OD x 1/16 SEC	BUNA-N 70 DURO
△	1	-	-	25	316002	FLAT WASHER	
△	1	-	-	26	309002	HEX HD. CAP SCREW	
△	1	-	-	27	311004-5	KEY	
△	1	1	1	28	209003	SHAFT SEAL	
△	1	1	1	29	311020-1	WHEEL DISK	



**NOTES:**

1. SEE APPLICATION TABLE FOR ASSEMBLY NO.
2. SEAT CYCLE BALL (ITEM 12) TO PINTLE (ITEM 4) DURING ASSEMBLY.
- △ 3. SEAL PINTLE AND REAR HOUSING (ITEM 1) MATING SURFACE WITH PERMATX "FORM-A-GASKET No. 3".
- △ 4. PINTLE AND REAR HOUSING VERTICAL AXIS TO BE ALIGNED WITHIN +/-2" TO ENSURE PUMP SUCTION AND DISCHARGE TIMING.
5. BOND BEARING SLEEVE (ITEM 21) TO SHAFT (ITEM 31 OR 36) WITH LOCTITE No. 620. USE SNAP RING (ITEM 19) AS A STOP TO LOCATE SLEEVE.
- △ 6. FRONT THRUST BEARING (ITEM 17) MUST BE INSTALLED WITH RACE SMALL BORE ON PISTON SIDE. PEEN FRONT HOUSING SPIGOT AT 2, 4, 8 & 10 O'CLOCK TO HOLD THRUST BEARING IN PLACE FOR ASSEMBLY. ENSURE PISTON RACE SPINS FREELY.
7. REAR THRUST BEARING (ITEM 3) MUST BE INSTALLED WITH RACE SMALL BORE ON REAR HOUSING SIDE.
8. STAMP TEXT "2" FOR H26 & "3" FOR H36 ON SHAFT AT LOCATION SHOWN.
- △ 9. SEAL FRONT HOUSING (ITEMS 32, 37 OR 39) AND REAR HOUSING MATING SURFACE WITH PERMATX "RTV BLACK SILICONE ADHESIVE SEALANT".

CUSTOMER COPY

APPLICATION	DASH No.	ASSEMBLY No.
H-20 HELM PUMP	-3	301001-3
H-26 HELM PUMP	-1	301001-1
H-36 HELM PUMP	-2	301001-2

ALL DRAWINGS, TECHNICAL DATA AND INTELLECTUAL INFORMATION ARE PROPERTY OF JASTRAM ENGINEERING LTD. THEY ARE NOT TO BE COPIED, REPRODUCED OR USED WITHOUT THE WRITTEN CONSENT OF JASTRAM ENGINEERING LTD.			
TOLERANCES: (UNLESS SPECIFIED OTHERWISE)			
X.X	+/- 0.1	FRACTION	+/- 1/64
X.XX	+/- 0.01	ANGULAR	+/- 0.5 DEG.
X.XXX	+/- 0.005	SURFACE FINISH	✓
ALL DIMENSIONS IN INCH(MM)			

N	28-12-03	SEE DCN 030075	
M	27-06-00	SEE DCN 990030	C.S.
L	05-11-97	SEE DCN 960034	C.S.
K	19-02-97	SEE DCN 970004	G.C.
J	01-05-95	SEE DCN 950023	G.C.
I	01-03-94	SEE DCN 940023	L.L.
H	16-06-93	SEE DCN 930042	L.L.
G	09-03-93	SEE DCN 930015	L.L.
F	19-04-91	SEE DCN 910006	G.C.
E	07-02-91	SEE DCN 900043	J.G.
D	18-12-90	SEE DCN 900037	B.B.
C	26-11-90	SEE DCN 900032	B.B.
B	16-11-90	SEE DCN 900022	J.G.
A	06-04-90	SEE DCN 900010	F.W.
-	05-02-90	PRODUCTION ISSUE	L.L.
REV.	DATE	DRAWING/DESIGN CHANGE No.	BY

**Jastram**  
 JASTRAM ENGINEERING LTD.  
 467 Mountain Highway  
 North Vancouver, B.C.  
 Canada V7J 2L3  
 Tel: (604) 986-0714  
 Fax: (604) 986-0334

DATE: 07-01-04	SCALE: 1":1"	DRAWN: G.C.	APPR: W.P.
TITLE: H20/26/36 HELM PUMP ASSEMBLY		DRAWING NUMBER: D-301001	